

Алматы (7273)495-231
Ангарск (3955)60-70-56
Архангельск (8182)63-90-72
Астрахань (8512)99-46-04
Барнаул (3852)73-04-60
Белгород (4722)40-23-64
Благовещенск (4162)22-76-07
Брянск (4832)59-03-52
Владивосток (423)249-28-31
Владикавказ (8672)28-90-48
Владимир (4922)49-43-18
Волгоград (844)278-03-48
Вологда (8172)26-41-59
Воронеж (473)204-51-73
Екатеринбург (343)384-55-89

Иваново (4932)77-34-06
Ижевск (3412)26-03-58
Иркутск (395)279-98-46
Казань (843)206-01-48
Калининград (4012)72-03-81
Калуга (4842)92-23-67
Кемерово (3842)65-04-62
Киров (8332)68-02-04
Коломна (4966)23-41-49
Кострома (4942)77-07-48
Краснодар (861)203-40-90
Красноярск (391)204-63-61
Курск (4712)77-13-04
Курган (3522)50-90-47
Липецк (4742)52-20-81

Магнитогорск (3519)55-03-13
Москва (495)268-04-70
Мурманск (8152)59-64-93
Набережные Челны (8552)20-53-41
Нижний Новгород (831)429-08-12
Новокузнецк (3843)20-46-81
Ноябрьск (3496)41-32-12
Новосибирск (383)227-86-73
Омск (3812)21-46-40
Орел (4862)44-53-42
Оренбург (3532)37-68-04
Пенза (8412)22-31-16
Петрозаводск (8142)55-98-37
Псков (8112)59-10-37
Пермь (342)205-81-47

Ростов-на-Дону (863)308-18-15
Рязань (4912)46-61-64
Самара (846)206-03-16
Санкт-Петербург (812)309-46-40
Саратов (845)249-38-78
Севастополь (8692)22-31-93
Саранск (8342)22-96-24
Симферополь (3652)67-13-56
Смоленск (4812)29-41-54
Сочи (862)225-72-31
Ставрополь (8652)20-65-13
Сургут (3462)77-98-35
Сыктывкар (8212)25-95-17
Тамбов (4752)50-40-97
Тверь (4822)63-31-35

Тольятти (8482)63-91-07
Томск (3822)98-41-53
Тула (4872)33-79-87
Тюмень (3452)66-21-18
Ульяновск (8422)24-23-59
Улан-Удэ (3012)59-97-51
Уфа (347)229-48-12
Хабаровск (4212)92-98-04
Чебоксары (8352)28-53-07
Челябинск (351)202-03-61
Череповец (8202)49-02-64
Чита (3022)38-34-83
Якутск (4112)23-90-97
Ярославль (4852)69-52-93

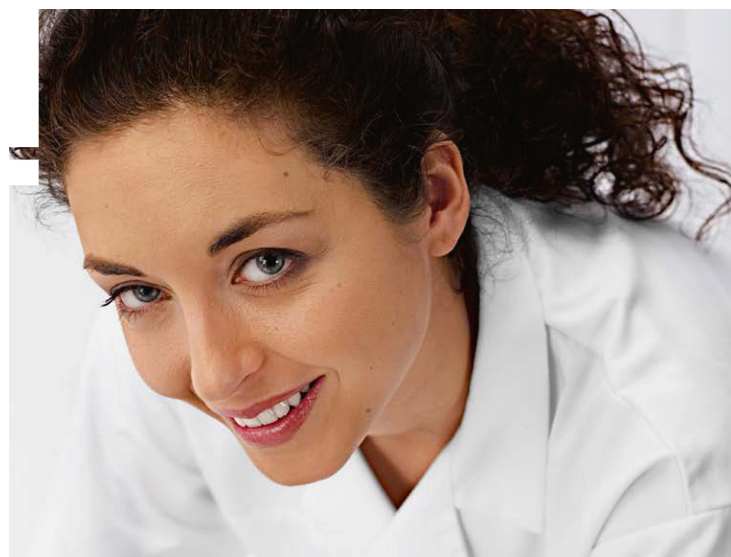
Россия +7(495)268-04-70

Казахстан +7(7172)727-132

Киргизия +996(312)96-26-47

<https://siemensmed.nt-rt.ru> || sdi@nt-rt.ru

SIEMENS



POLYMOBIL Plus

Simplicity and reliability in mobile X-ray imaging

Simplicity and reliability in mobile X-ray

POLYMOBIL Plus

Over the years, and in thousands of facilities worldwide, POLYMOBIL® has established its strong reputation. POLYMOBIL Plus lives up to its name in offering mobile versatility for a multitude of applications.

POLYMOBIL Plus makes it easy to bring the X-ray system to the patient. Whether for patient wards, intensive care, operating room, sports medicine practice or for occupational medical facilities, POLYMOBIL Plus is designed to give you high value for the investment.

POLYMOBIL Plus –
the versatile
allrounder





SIEMENS

POLYMOBIL Plus

Designed to support your daily routine

From the first time you touch it –
until the end of your working day.

Easy to move

Transporting POLYMOBIL Plus from department to department can include the necessity to move it in and out of elevators, over thresholds and around corners. The platform's short wheelbase with large polyurethane tires helps to overcome rolling resistance, ensuring that the compact system glides easily.

Easy to use

POLYMOBIL Plus is as easy to use as it is to move. The tube support arm is counterbalanced, allowing great freedom of movement and precise positioning. The adjustable collimator and light marker ensure rapid and correct positioning in the desired projection. Because the tube head is rotatable in all planes, both horizontal and vertical exposures can be made – and the X-ray tube angulation is conveniently shown on the scales on both sides of the tube head.

The touch-sensitive buttons and digital display of kV and mAs values on the ergonomically designed operating console enable exposure parameters to be set easily and quickly.



Easy to see

The high-frequency, high-output X-ray generator with multipulse voltage provides efficient dose yield, keeping exposure times short and minimizing motion artifacts. This results in good reproducibility and consistent image quality.

Just plug POLYMOBIL Plus into any standard wall socket and you have full power – always.

Easy to choose

When system reliability, simple features for streamlined operation, and value-for-money quality are your priorities for mobile X-ray, POLYMOBIL Plus from Siemens is your choice.

The small but powerful system combines agility and effortless adjustment of the counterbalanced tube head with intuitive and straight-forward operation.

As in all Siemens mobile X-ray systems, it is the deliberate combination of helpful details, that let you experience versatility and simplicity with POLYMOBIL Plus in your facility.



POLYMOBIL Plus
the versatile
allrounder

Technical data

POLYMOBIL Plus

X-ray generator and controls	
Mains voltage	110 V ± 10% 50/60 Hz 230 V ± 10% 50/60 Hz
Power output	Standard: max. 125 kV 128 mA max. 250 mA 63 kV max. 16 kW – 99 kV – 161 mA – 100 ms (IEC 60601-2-7) min. 0.32 mAs 20 kW option: max. 125 kV 130 mA max. 300 mA 50 kV (to mAs < 10 mAs) max. 20 kW – 99 kV – 202 mA – 100 ms (IEC 60601-2-7) min. 0.32 mAs
Overcurrent release	An on-site 15 A/characteristic C overcurrent release (trip breaker) is recommended by DIN VDE 0100-710 for supply network voltages of 230 V/240 V. Country-specific requirements apply for the fuse values to be used for other supply network voltages.
Impedance of the power supply	Max. 1 Ω at 110 V Max. 1 Ω at 230 V
kVp range	40–125 kV in 23 or 45 steps
mAs range (Tube current time product)	Line Voltage: 230 V 0.32–250 mAs in 30 or 59 steps: 0.50–200 mAs at 40–48 kV 0.40–250 mAs at 50 kV 0.40–200 mAs at 52–57 kV 0.32–200 mAs at 60–63 kV 0.32–160 mAs at 66–81 kV 0.32–125 mAs at 85–102 kV 0.32–100 mAs at 109–125 kV Line Voltage: 110 V 0.32–160 mAs in 28 or 55 steps: 0.50–125 mAs at 40–48 kV 0.40–160 mAs at 50 kV 0.40–125 mAs at 52–57 kV 0.32–125 mAs at 60–63 kV 0.32–100 mAs at 66–81 kV 0.32–80 mAs at 85–102 kV 0.32–64 mAs at 109–125 kV
Shortest exposure time	≤ 4 ms (40–125 kV)
Max. exposure time	6 s
Exposure release	Exposure release button with 5 m (16.4 feet) of spiral cable
Length of power cord	5.5 m
Power line connection	Grounded safety power socket (L/N/Gnd)
Tube housing	
X-ray tube	IAE X22 with a nominal focal spot value 0.8 (acc. to IEC 60336)
Anode rotation	2,800 r.p.m., 50 Hz (anode angle 15°)
Tube housing heat storage capacity	800,000 J = 1,100,000 HU
Anode heat storage capacity	80,000 J = 107,000 HU
Total inherent filtration	Min. 3.0 mm according to IEC 60522
Collimator	Manually-adjustable multi-leaf collimator, rotatable ± 45°
Tube housing assembly	Max. temperature 60°C, max. 2,800 mAs/h, nominal continuous rating 100 W until the covers reach 60°C
Collimator light and light field intensity	Halogen lamp min. 180 lux at 1 m SID (without DAP equipment)
Weight	Approx. 171 kg
Dimensions footprint (l x w x h) (Tube in park position)	1,305 x 631 x 1,325 mm
Tube positioning	Max. focal spot height 1,895 mm Min. focal spot height 420 mm Max. horizontal extension 1,100 mm

POLYMOBIL Plus –
the versatile
allrounder



Алматы (7273)495-231
Ангарск (3955)60-70-56
Архангельск (8182)63-90-72
Астрахань (8512)99-46-04
Барнаул (3852)73-04-60
Белгород (4722)40-23-64
Благовещенск (4162)22-76-07
Брянск (4832)59-03-52
Владивосток (423)249-28-31
Владикавказ (8672)28-90-48
Владимир (4922)49-43-18
Волгоград (844)278-03-48
Вологда (8172)26-41-59
Воронеж (473)204-51-73
Екатеринбург (343)384-55-89

Иваново (4932)77-34-06
Ижевск (3412)26-03-58
Иркутск (395)279-98-46
Казань (843)206-01-48
Калининград (4012)72-03-81
Калуга (4842)92-23-67
Кемерово (3842)65-04-62
Киров (8332)68-02-04
Коломна (4966)23-41-49
Кострома (4942)77-07-48
Краснодар (861)203-40-90
Красноярск (391)204-63-61
Курск (4712)77-13-04
Курган (3522)50-90-47
Липецк (4742)52-20-81

Магнитогорск (3519)55-03-13
Москва (495)268-04-70
Мурманск (8152)59-64-93
Набережные Челны (8552)20-53-41
Нижний Новгород (831)429-08-12
Новокузнецк (3843)20-46-81
Ноябрьск (3496)41-32-12
Новосибирск (383)227-86-73
Омск (3812)21-46-40
Орел (4862)44-53-42
Оренбург (3532)37-68-04
Пенза (8412)22-31-16
Петрозаводск (8142)55-98-37
Псков (8112)59-10-37
Пермь (342)205-81-47

Ростов-на-Дону (863)308-18-15
Рязань (4912)46-61-64
Самара (846)206-03-16
Санкт-Петербург (812)309-46-40
Саратов (845)249-38-78
Севастополь (8692)22-31-93
Саранск (8342)22-96-24
Симферополь (3652)67-13-56
Смоленск (4812)29-41-54
Сочи (862)225-72-31
Ставрополь (8652)20-65-13
Сургут (3462)77-98-35
Сыктывкар (8212)25-95-17
Тамбов (4752)50-40-97
Тверь (4822)63-31-35

Тольятти (8482)63-91-07
Томск (3822)98-41-53
Тула (4872)33-79-87
Тюмень (3452)66-21-18
Ульяновск (8422)24-23-59
Улан-Удэ (3012)59-97-51
Уфа (347)229-48-12
Хабаровск (4212)92-98-04
Чебоксары (8352)28-53-07
Челябинск (351)202-03-61
Череповец (8202)49-02-64
Чита (3022)38-34-83
Якутск (4112)23-90-97
Ярославль (4852)69-52-93

Россия +7(495)268-04-70

Казахстан +7(7172)727-132

Киргизия +996(312)96-26-47

<https://siemensmed.nt-rt.ru> || sdi@nt-rt.ru